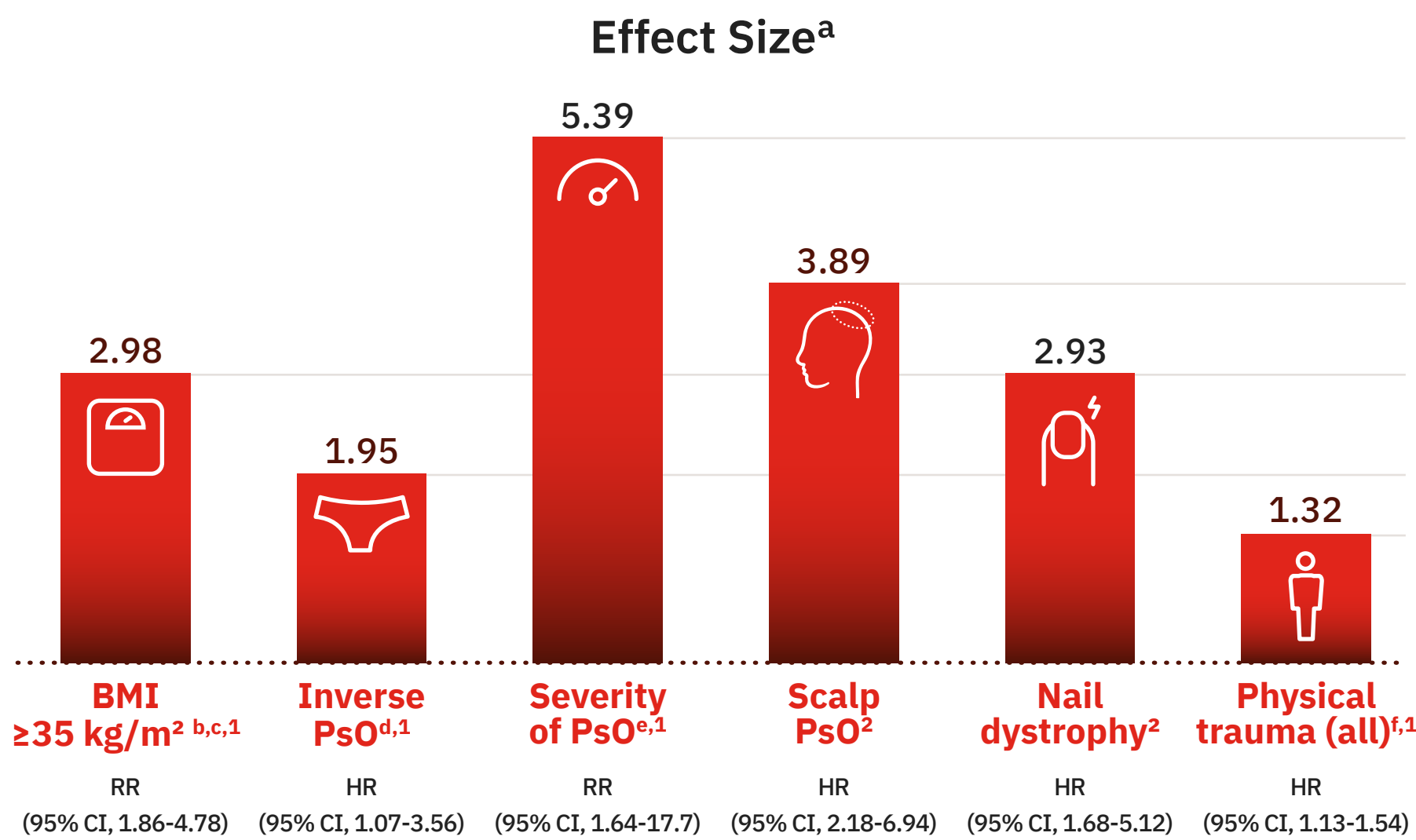


Comorbidities in Psoriasis

Psoriasis and Psoriatic Arthritis

There are several risk factors that may contribute to the development of PsA in patients with PsO



Other risk factors may include family history of PsA, smoking, and duration of PsO¹

Simple mnemonic to aid in screening of PsA³



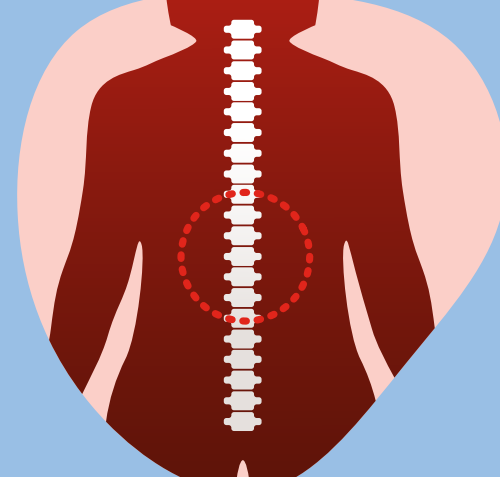
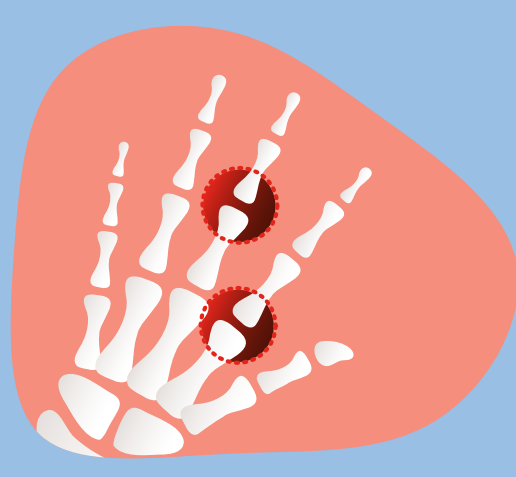
Joint

PAIN • **STIFFNESS** • **AXIAL**

after waking in the morning, or after a period of inactivity.

involvement

Swelling/Sausage digit (dactylitis)



In PsA, irreversible joint damage⁴

Can happen with a delay in diagnosis of just 6 months

Can lead to worse long-term physical function



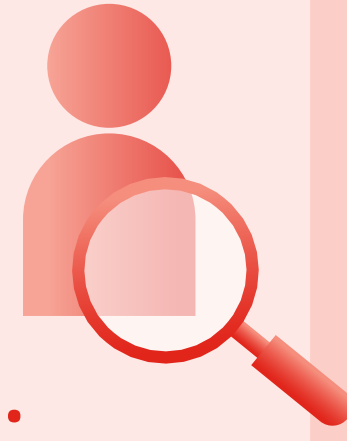
AAD/NPF Recommendations for Dermatologists⁵

Patients with PsO should be informed about the association between PsO and PsA



PsA should be considered in all patients with cutaneous PsO

Patients with signs and symptoms suspicious for PsA should be fully evaluated for PsA.



Initiate appropriate PsA therapy if comfortable with the diagnosis or otherwise consult with a rheumatologist for assessment and management



Explore the other infographics in the **Comorbidities in Psoriasis** series

Note: Risk factors for the development of PsA in patients with PsO are from cohort studies unless otherwise stated.

^aAdjusted for other covariates. ^bBMI ≥ 35.0 kg/m² vs. normal (BMI < 25.0 kg/m²). ^cTime varying exposure.

^dIntergluteal/perianal involvement. ^ePASI score > 20 vs. < 10 . ^fValues based on the general population.

AAD=American Academy of Dermatology; BMI=Body Mass Index; CI=Confidence Interval; HR=Hazard Ratio;

NPF=National Psoriasis Foundation; PASI=Psoriasis Area and Severity Index; PsA=Psoriatic Arthritis;

PsO=Psoriasis; RR=Relative Risk.

1. Scher JU, et al. *Nat Rev Rheumatol*. 2019;15(3):153-166. 2. Wilson FC, et al. *Arthritis Rheum*. 2009;61(2):233-239.

3. Cohen JM, et al. *J Am Acad Dermatol*. 2015;72(5):905-906. 4. Haroon M, et al. *Ann Rheum Dis*. 2015;74(6):1045-1050.

5. Elmets CA, et al. *J Am Acad Dermatol*. 2019;80(4):1073-1113.