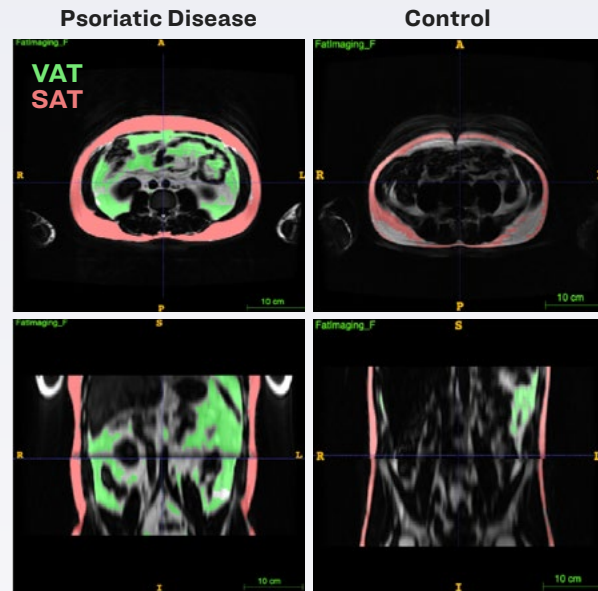


Patients With Psoriatic Disease Accumulate Visceral Fat Disproportionately¹

Comparison of Adipose Tissue



Patients with psoriatic disease had a

13.6% + **5.9%**
greater VAT/SAT ratio + greater VAT volume

compared with BMI-matched controls.

STUDY DESIGN

Methods: cross-sectional MRI pilot study

Patient Population: n=30 patients (8 with PsO only; 22 with PsA) vs. n=30 BMI-matched controls

Images adapted from Blake T, et al. *Arthritis Res Ther.* 2023;25(1):108. VAT and SAT labels added. Free to use under the Creative Commons Attribution 4.0 International License (CC-BY 4.0): <https://creativecommons.org/licenses/by/4.0/>

BMI=body mass index; CV=cardiovascular; IFN- γ =interferon gamma; IL=interleukin; MRI=magnetic resonance imaging; PASI=Psoriasis Area and Severity Index; PsA=psoriatic arthritis; PsO=psoriasis; SAT=subcutaneous adipose tissue; TNF=tumor necrosis factor; VAT=visceral adipose tissue.
1. Blake T, et al. *Arthritis Res Ther.* 2023;25(1):108. 2. Guo Z, et al. *JID Innov.* 2022;2(1):100064. 3. Booth A, et al. *Horm Mol Biol Clin Invest.* 2016;26(1):25-42. 4. Longo M, et al. *Int J Mol Sci.* 2019;20(9):2358. 5. Lecumberri A, et al. *J Invest Dermatol.* 2025;145(10):2474-2483.e4. 6. Phillips CL, et al. *Exp Biol Med (Maywood).* 2020;245(2):109-121. 7. Maximus PS, et al. *Cytokine.* 2020;133:155144. 8. Lee BW, et al. *Int J Mol Sci.* 2023;24(14):11662.

Obesity Is Characterized by Excessive Expansion of VAT²

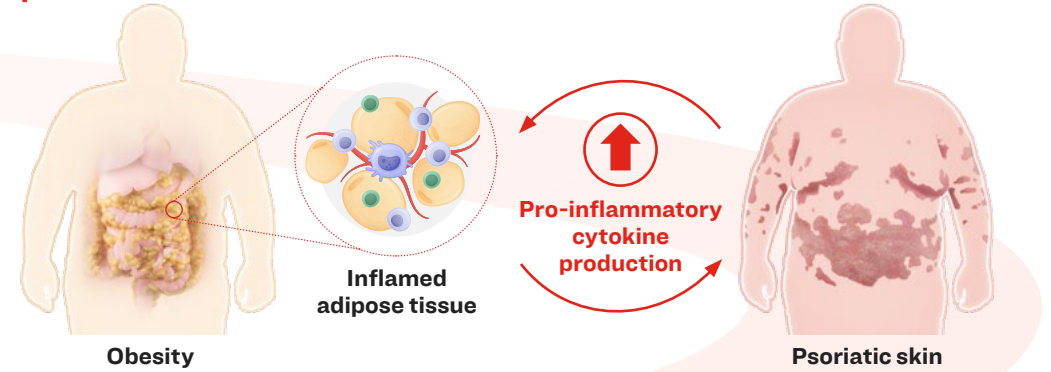
Not All Adipose Tissue Is Equal^{1,3,4}

SAT

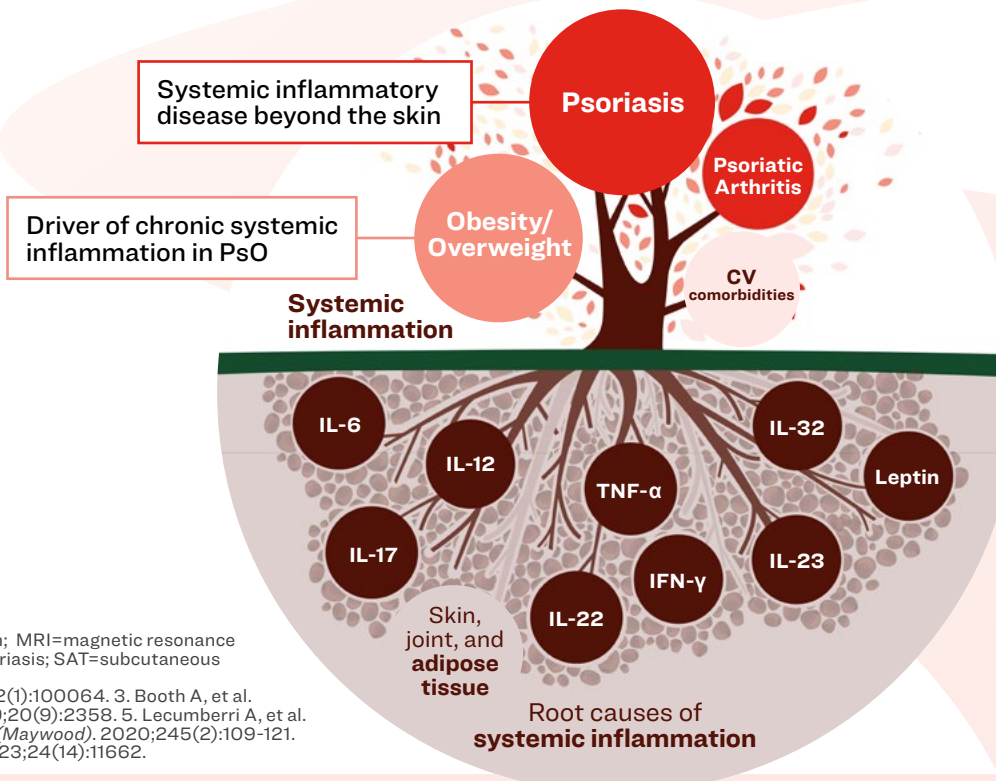
- Located under the skin
- Largest adipose fat storage depot

VAT

- Located around organs
- Highly metabolically active
- Associated with **increased IL-6, TNF- α , IL-17**



PsO and Obesity Are Rooted in Chronic Systemic Inflammation^{2,5-8}



In patients with PsO and obesity, **residual systemic inflammation** may persist even when skin is nearly clear (PASI \leq 2) due to higher BMI and VAT.⁵