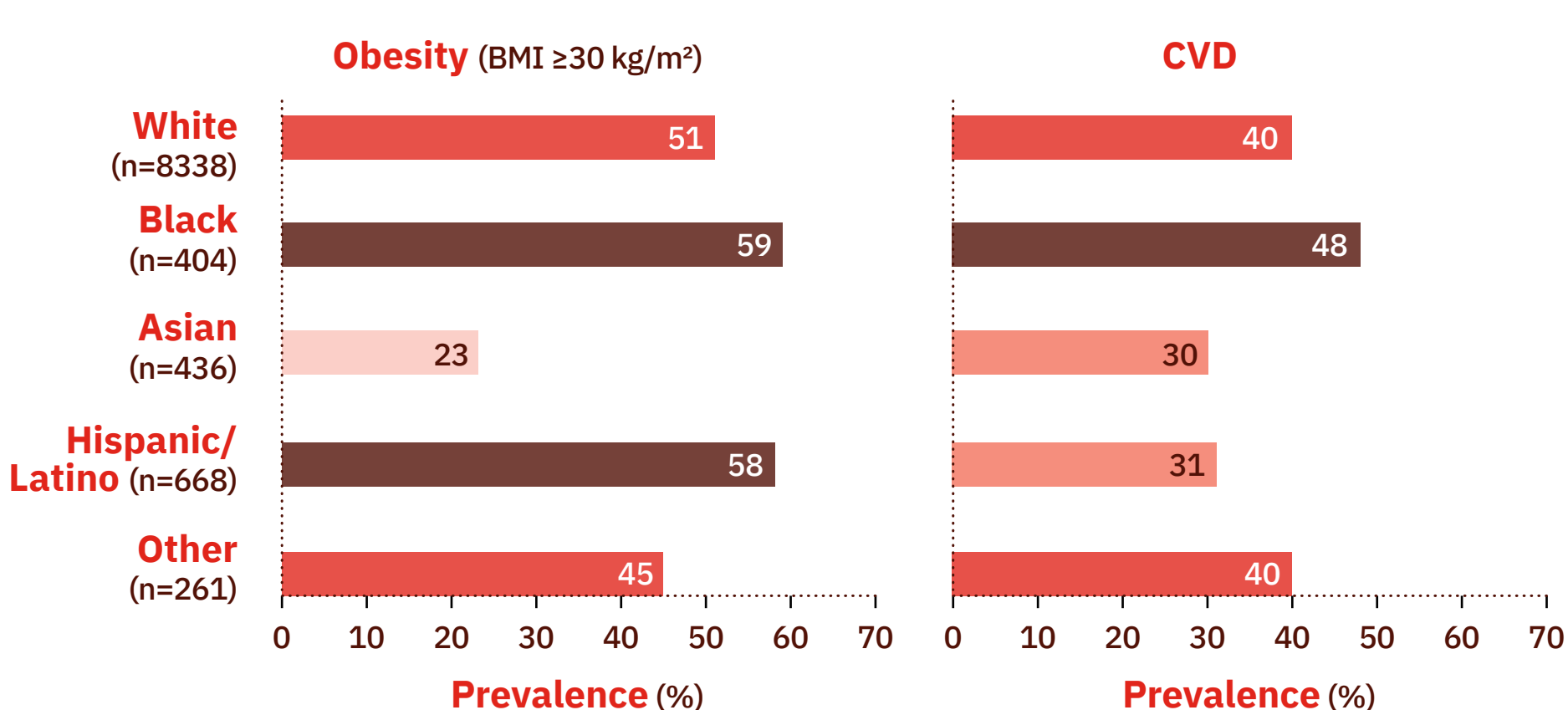


Comorbidities in Psoriasis

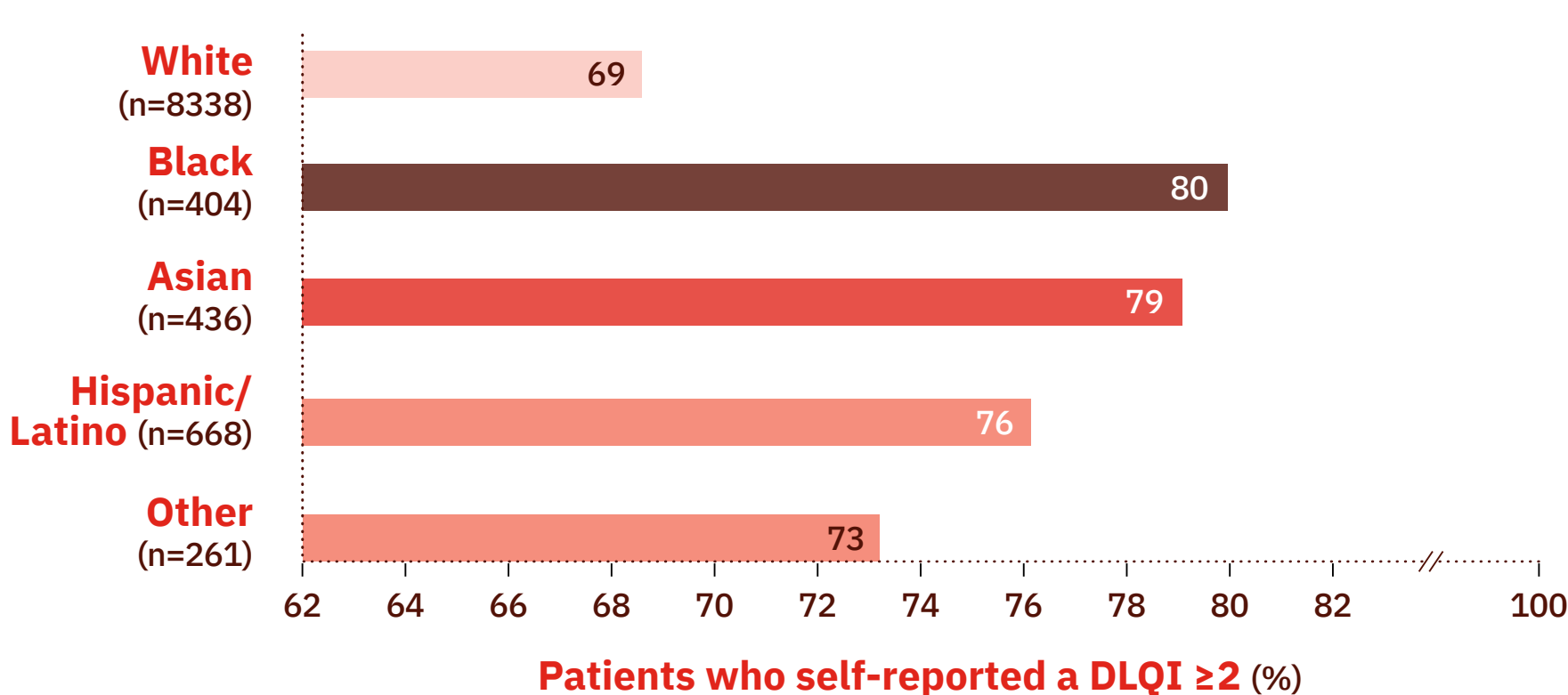
Psoriasis and Race/Ethnic Variations

PSOLAR: Prospective Registry of Patients With Moderate-to-Severe PsO – North American Dataset

Prevalence of PsO Comorbidities by Self-Reported Race/Ethnicity¹

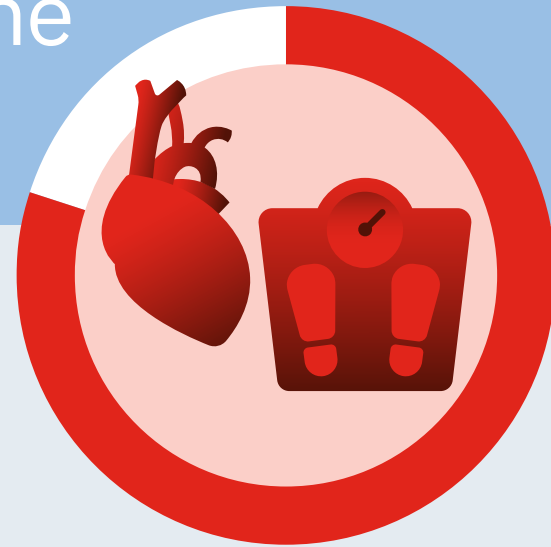


Association of Self-reported Race Ethnicity with HRQoL¹



Patients with moderate-to-severe PsO who are Black have **higher rates of obesity and CVD than White patients**, and are more likely to have a **poorer QoL** due to the impact of disease¹

80% of Black patients reported a DLQI ≥2, vs. **69%** of White patients¹



Presentation of PsO in Patients With Skin of Color

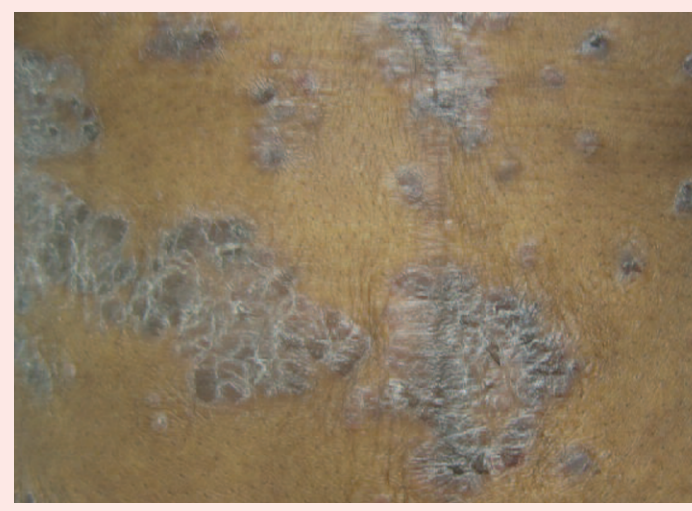
In individuals with darker skin types, **recognizing inflammation** is nuanced since erythema often appears violaceous, dark brown, or gray²



Post-inflammatory hyperpigmentation secondary to PsO³

Patients may be left with **hyper- or hypopigmentation** after psoriatic lesions have resolved²

Prevalence of PsO varies between different races⁴



PsO in an African American woman³

Race and ethnicity may be associated with socioeconomic disparities that impact **access and adherence** to different types of treatments⁵



Explore the other infographics in the **Comorbidities in Psoriasis** series

BMI=Body Mass Index; CVD=Cardiovascular Disease; DLQI=Dermatology Life Quality Index; HRQoL=Health-related Quality of Life; PsO=Psoriasis; PSOLAR=Psoriasis Longitudinal Assessment and Registry; QoL=Quality of Life.

1. Takeshita J, et al. *J Invest Dermatol.* 2022;142(9):2528-2531.e3. 2. Kaufman BP, Alexis AF. *Am J Clin Dermatol.* 2018;19(3):405-423. 3. Alexis AF, Blackcloud P. *J Clin Aesthet Dermatol.* 2014;7(11):16-24. 4. Armstrong AW, et al. *JAMA Dermatol.* 2021;157(8):940-946. 5. Xie Z, et al. *PLoS One.* 2019;14(2):e0212117.