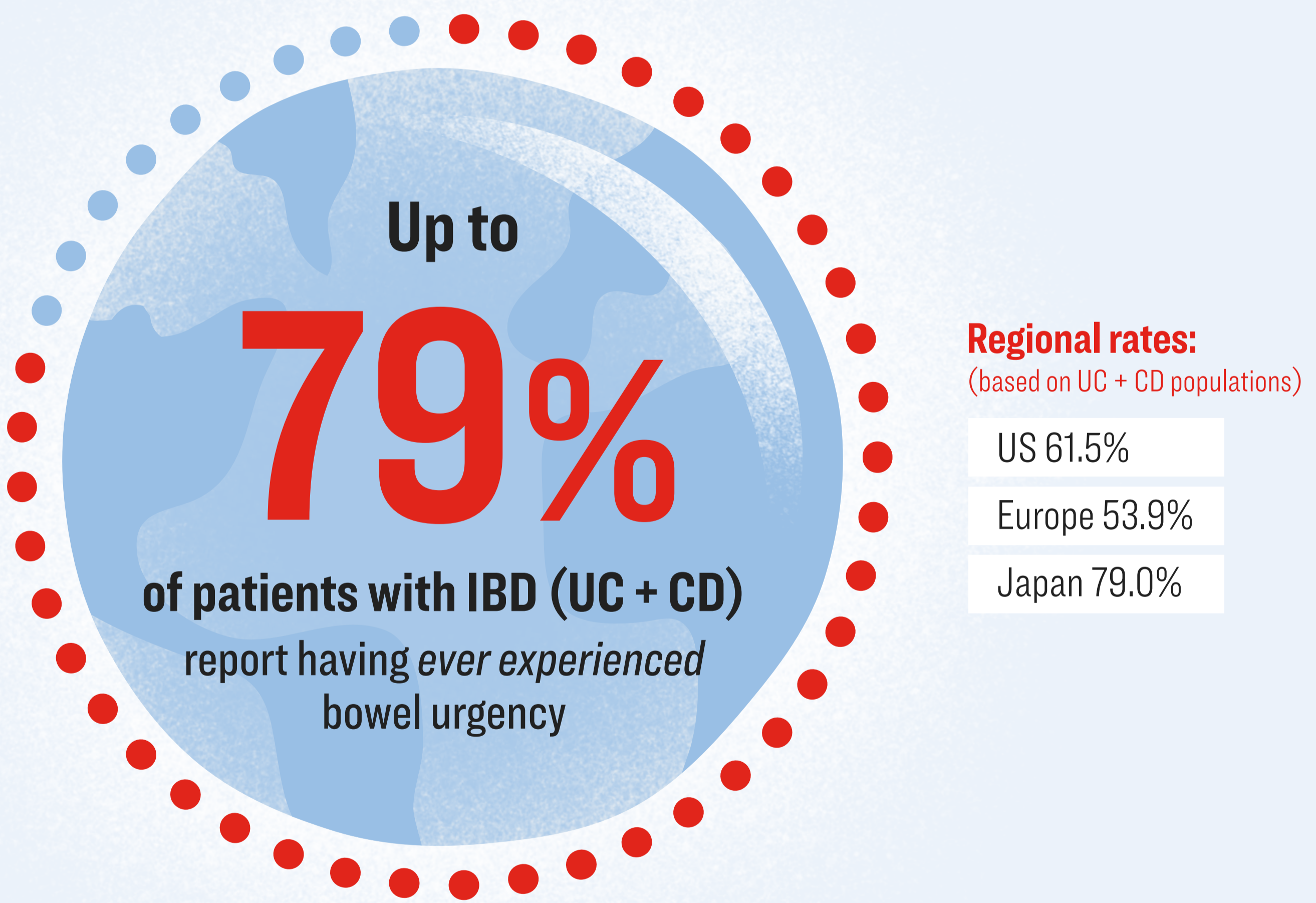


The Hidden Emotional Burden of Bowel Urgency in IBD

Results from the CONFIDE Survey: US, Europe, and Japan (UC + CD)

Bowel urgency profoundly affects the **emotional and daily life** of patients with UC and CD globally, including **61.5% of US patients**, yet remains undertreated.



Bowel urgency drives **anxiety, depression, and embarrassment** and **affects travel, relationships, and daily activities**

CD=Crohn's Disease; IBD=Inflammatory Bowel Disease; UC=Ulcerative Colitis; US=United States.

Rubin DT, Bleakman AP, Travis S, et al. Broad impact of bowel urgency in ulcerative colitis and Crohn's disease: US, European, and Japanese patient and healthcare professional perspectives from the Communicating Needs and Features of IBD Experiences (CONFIDE) Survey. *Adv Ther.* 2025;42(9):4510-4526.

MMAT-02369 © 2026 Eli Lilly and Company. All rights reserved.